



Font Pair **Designer**



Fontpár **Tervező**

www.fontdesign.hu

Documentation / Leírás

INTRODUCTION

Font Pair Designer is a font management .NET software that lets you list, display, group and compare fonts.

A font pair is a combination of a fonts.

The essence of the application is pairing, searching and finding nearly similar fonts.

The software supports letter combinations, letter mixing, and the insertion of special symbols into text editing programs.

INSTALLING PROGRAM

You can purchase the software from the Microsoft Store. You can find more information and a link on the program's website.

Before running the program, please download and install the .NET framework from its official website, usually this system is automatically installed with Windows.

Run the Font Pair Designer application, first create a shortcut to it on the desktop.

Select the Hungarian language from the drop-down menu by clicking on the first icon.

THE MAIN PARTS OF THE SOFTWARE

The program has seven main components, which are located on each tab and are essential from the point of view of operation.

➔ 1) Font List

A complete or categorized list of fonts that have been copied to a folder.

➔ 2) Publication

A hierarchical template or pattern with a header and a body of text, as it is customary in publications to structure the text by specifying three separate fonts.

➔ 3) Font Tables

A character table that displays all #FFFF or 65536 characters, letters, or the entire Unicode character set, in a single table. A special table is a list of characters or letters included in the font set that can be displayed.

➔ 4) Ordering

Listing in ascending or descending order using parameters. For example, a list by line weight, roundness and lowercase x height.

➔ 5) Similar Fonts

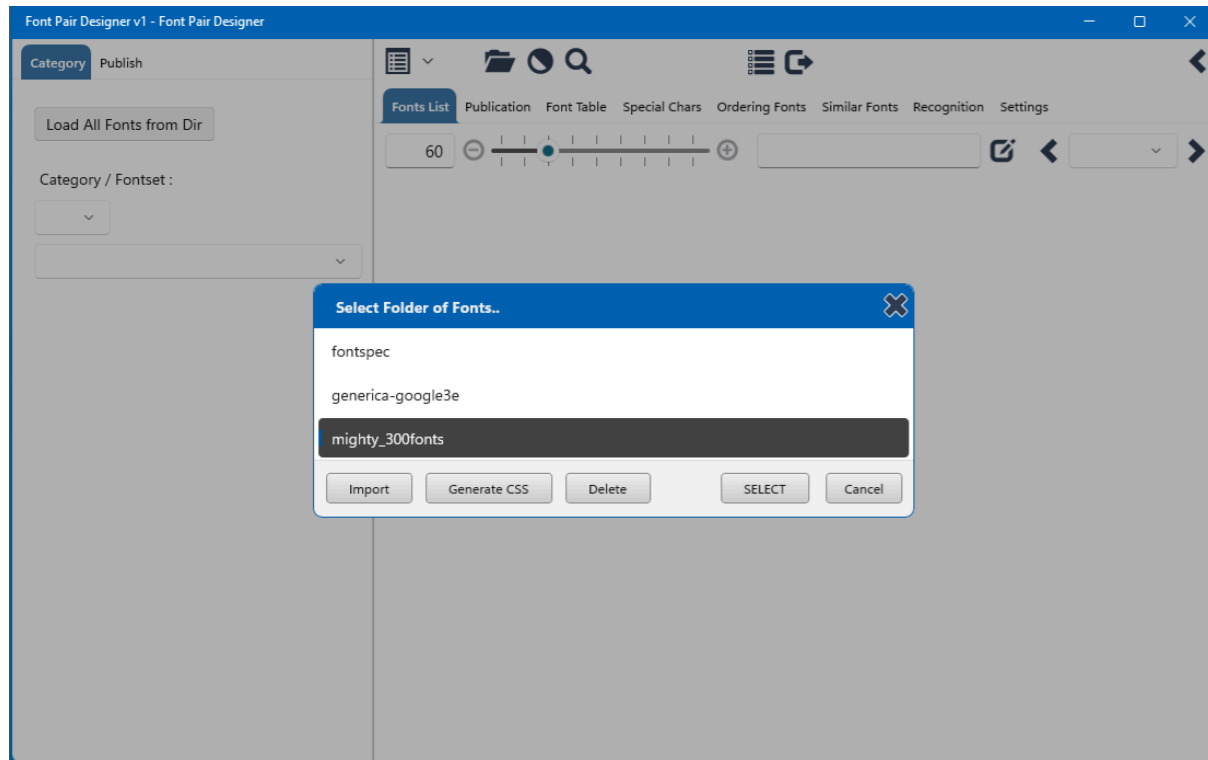
Comparison of fonts based on a difference algorithm. Close or very similar fonts are placed at the top of the list in order. Different, different or contrasting fonts are found near the end of the list.

➔ 6) Settings

Specifying listing parameters. Loadability test of fonts and filenames.

MANAGING FOLDERS OF FONTS

How can we add fonts to the program?



We need to copy the fonts into a directory we created. Then we need to import this folder containing the fonts into the program by clicking on the "Import" button. In the picture above, the list contains three imported directories or folders, which you can switch between with the "Select" button. Once the folder has been selected, press the "Load - All Fonts from Dir" button. You can then browse the fonts in the library on the "Font List" tab.

It is also possible to delete the imported font folder, we can also create CSS files, but after importing, the software sets everything for us, so we just have to wait for the end of the import, and the CSS has been generated.

For example, we can match each library to font families. One directory may contain files for serif, another directory may contain files for example sans serif or other fonts. You can easily switch between the imported libraries with the open icon.

COMPATIBILITY OF FONTS

The Font Pair Designer application does not manage all fonts, only the ones it can load. If you cannot load it, you must use a font editor application to convert the given font or font file into an understandable format.

It can handle and load TTF (True Type Font) and OTF (Open Type Font) fonts.

Clicking the "T" button on the "Settings" tab displays the fonts that could not be loaded.

The software indicates the names and file names of fonts containing non-standard letters with an asterisk after the font name or file name. Non-standard names may change the display of the font.

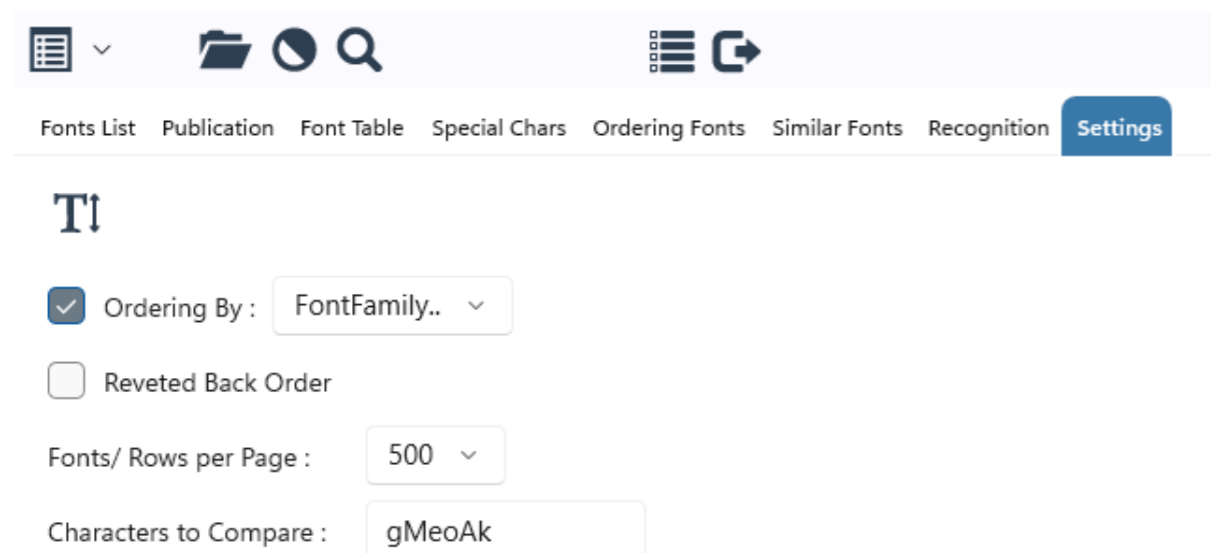
SIMILAR FONTS - SEARCH

You can search for fonts on the Similar Fonts tab. Searches for fonts that are in the imported folder. So it only checks for similarity or identity between fonts that are in the imported folder. You can access the imported folders with the open icon, then browse and choose from the folders with the "Select" button.

The search results are in a list. It is worth looking through the first two hundred results to determine the similarities. In the example below, we searched for the font "Generica", and the search result is a font shown on line 122, which is very similar to the original Generica font. It can be seen that Manjari Thin font can be selected to replace Generica.

SETTINGS

On the settings tab, the following checkboxes and buttons control the listing of fonts.



Ordering By

Lists in ascending (or reverse) order based on the parameter specified in the drop-down list on the "Font List" tab.

Reverted Back Order

The lists are displayed in reverse order.

Fonts/ Rows per Page

Number of fonttypes per page when scrolling. You can scroll through the "Font List" on the first tab with the left and right arrow buttons.

Characters to Compare

Each given characters are compared in the Similar Fonts Tab. By entering a letter or two, the content can be loaded faster.

„T” Button - Test

Tests the fonts in the selected or current library and then lists the ones that the viewer cannot load.

TOOLBAR ABOVE

Open folder icon

You can browse under the main directory with the open icon. Each directory contains the fonts or font files that were imported into the given directory using the "Import" function of the program.

Dark mode icon

As a result, the surface of the program takes on a dark or light shade.

Search icon

With the help of this function, we can search in text.

Check list icon - Unselect all checkboxes

Delete the status of checked checkboxes on the Font List tab.

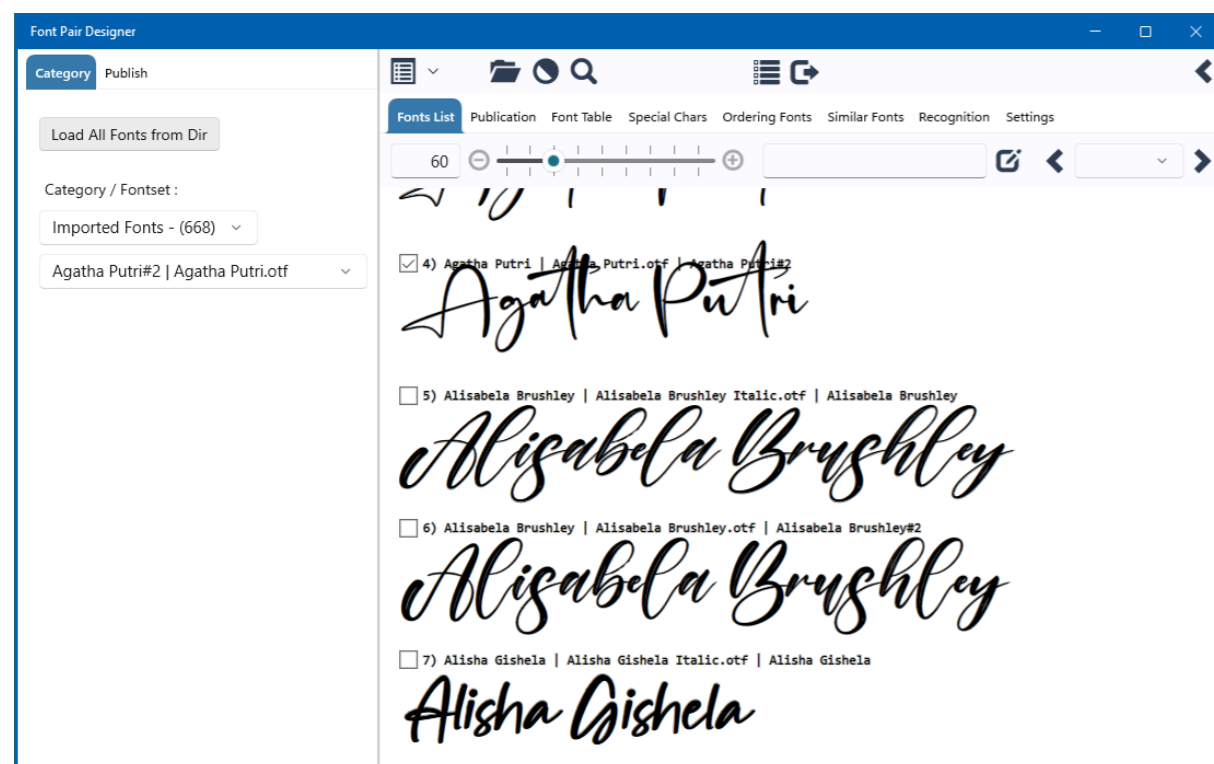
Export icon - copy checked fonts into specified folder

We can arrange and sort fonts with this function. By ticking the checkboxes, we can create a copy of the imported fonts that we checked on the Font List tab in a folder.

If the checked fonts have been exported to an external, imported directory, we can re-import this folder into the program. This is important if we want to use the program to manage imported folders in which fonts have been grouped according to certain categories. For example, one folder can contain serif fonts, another can contain decorative letters, and a third can contain, for example, fonts containing special fonts.

FONT LIST - MORE FUNCTIONS

Scrollable, ordered and complete list of fonts and typefaces in the current library.



Load - All Fonts from Dir

Loads and displays all fonts in the current library.

Font size

The size of fonts can be adjusted with the slider.

Text caption

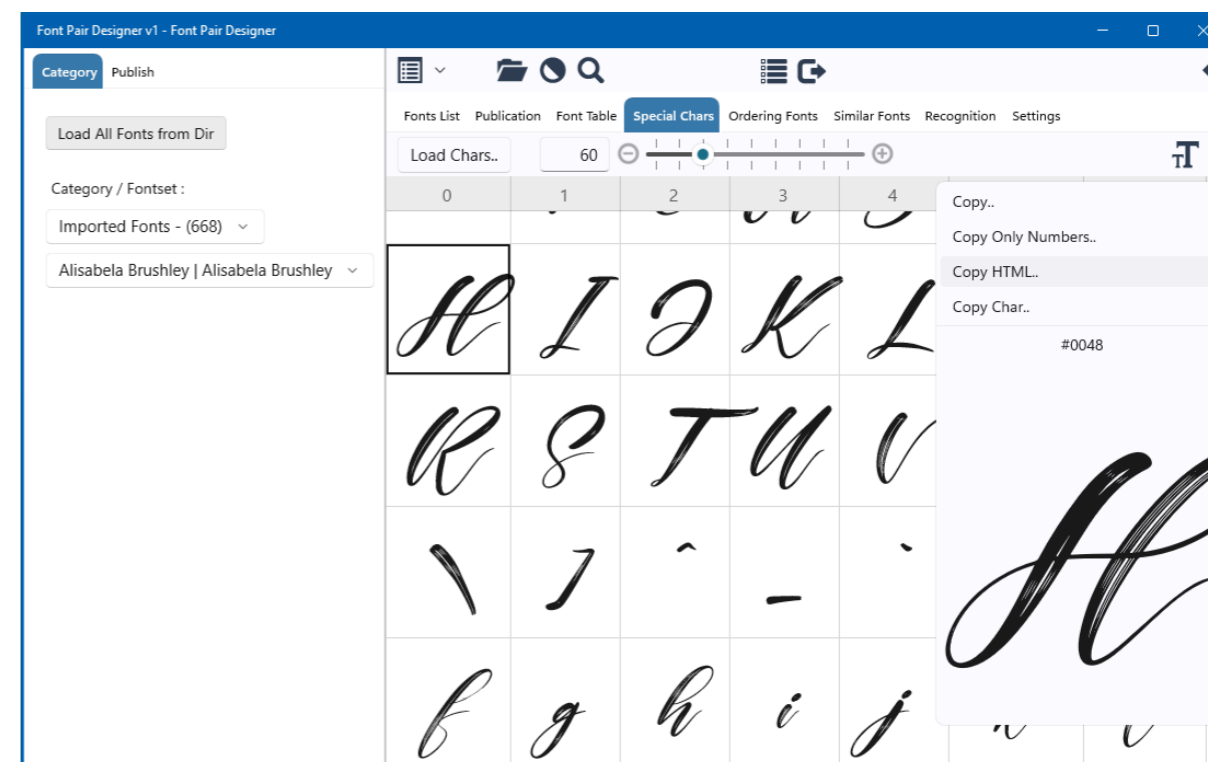
We can change the caption of the fonts. For example, the description Generica is the same for all fonts, see the Similar Fonts tab later.

Paging

You can choose a page number in a drop-down list, or you can go back and forth one by one by clicking on the arrows.

FONT TABLES

The software helps you insert special characters into text editing programs.



With the help of the software, the letters of the font set can be pasted to the clipboard for further use, in the case of special characters, two tables help to select and paste the letters, font icons or pictograms. Special symbols can be pasted from the clipboard for use in other graphic or text editing programs.

Font Table

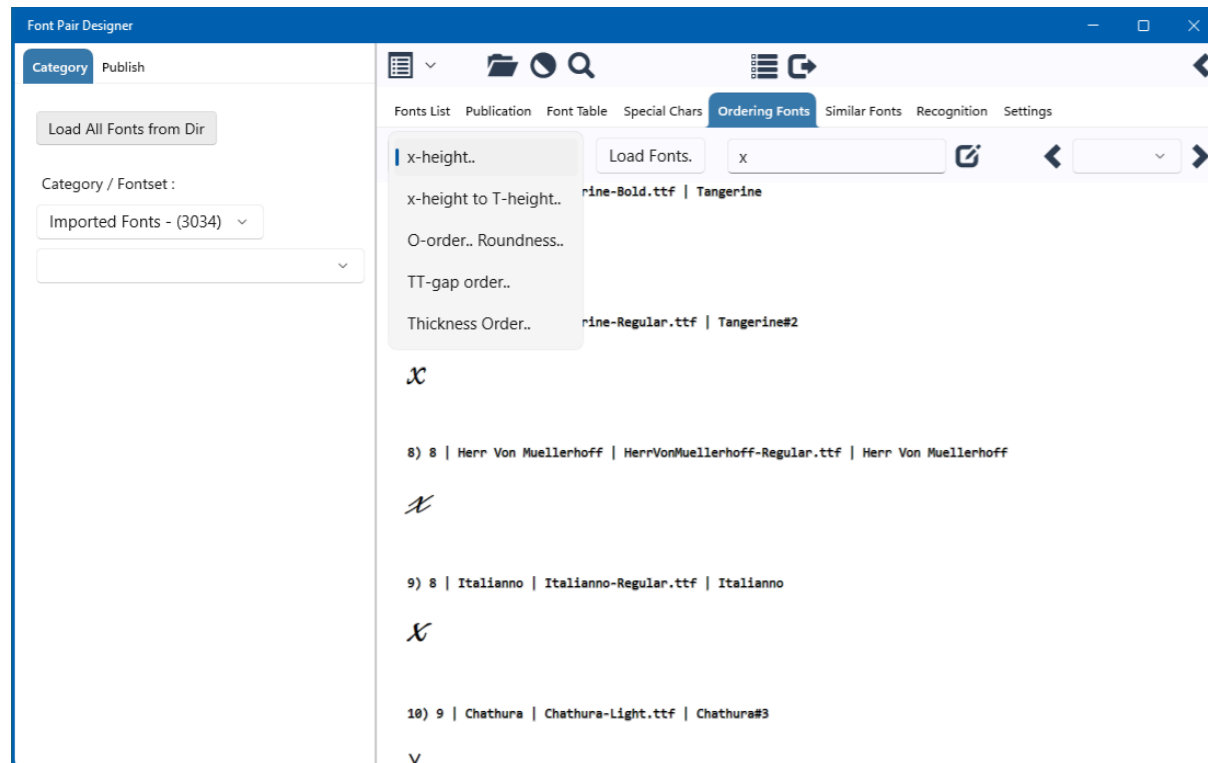
A character table that displays all #FFFF or 65536 characters, letters, or the entire Unicode character set, in a single table.

Special Table

A list of characters or letters included in the font set that can be displayed. So if the entire ABC was not created with a font editor application, but only a part of it, then the table only shows this displayable subset of the letters.

ORDERING FONTS

Another listing function of the program, which you can use to establish order, is sorting according to different parameters of the fontface.



Such a parameter is, for example, x-height or mid-height, which lists all the fonts in the given directory in ascending order according to x-height. x-height is the height of the letter x, and also determines the vertical size of the lowercase letters.

Listing in ascending or descending order using the parameters below.

x-height

x to T height difference

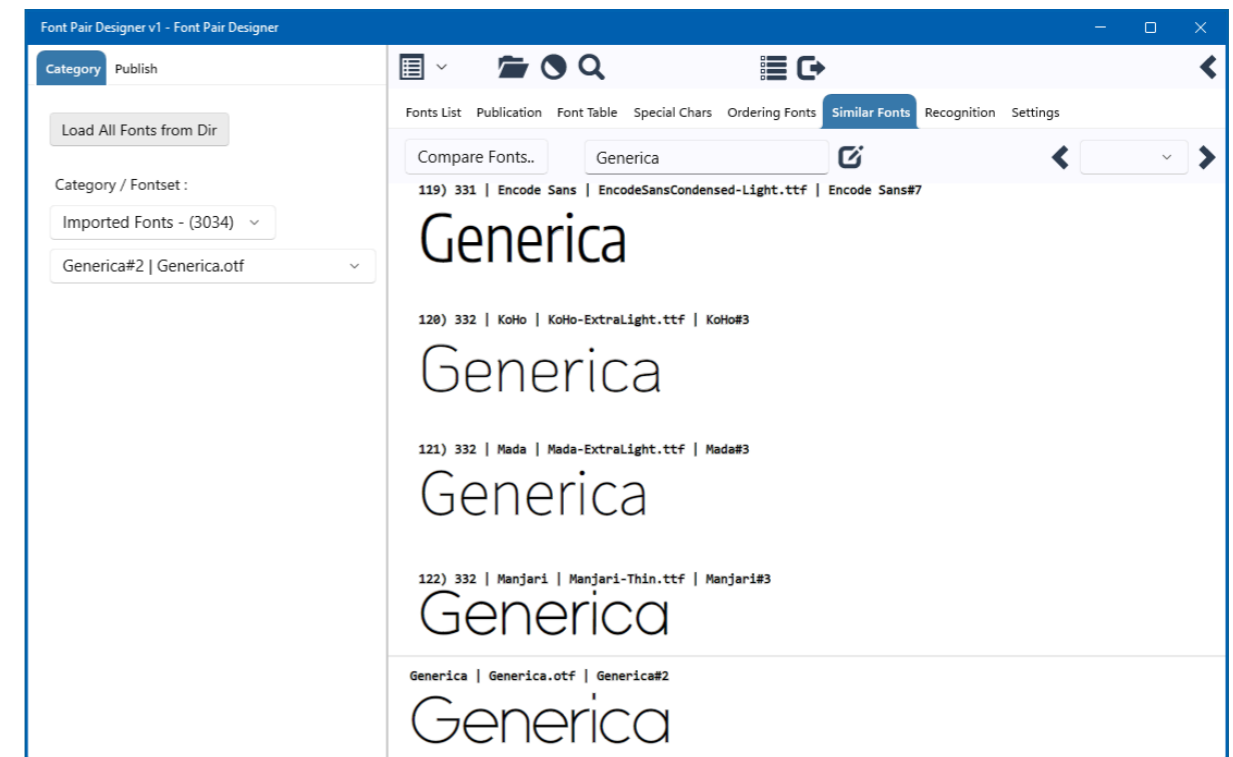
O-Roundness..

TT gap order

Thickness..

SIMILAR FONTS

Comparison of fonts based on a difference algorithm.



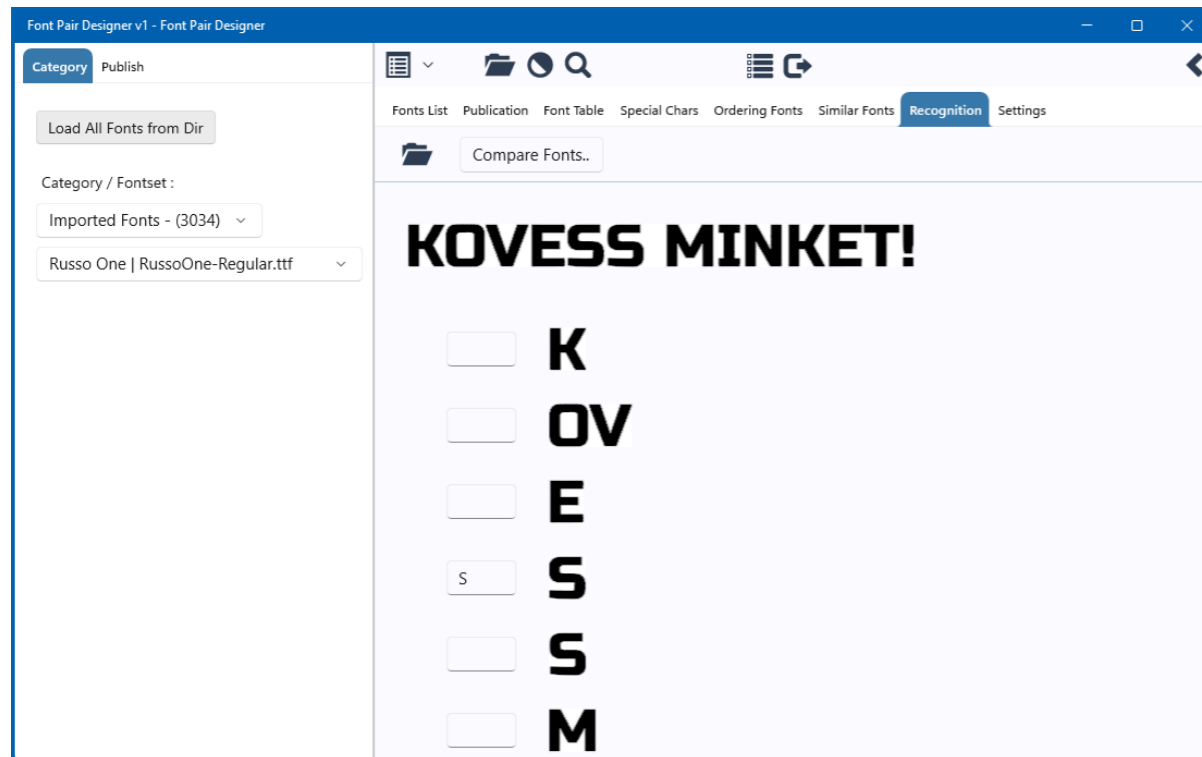
Close or very similar fonts are placed at the top of the list in order. Different, different or contrasting fonts are found near the end of the list.

The program uses a difference algorithm to find similarities between fonts. It creates a list, at the beginning of which it displays the similar fonts, and as you approach the bottom of the list, you can find fonts that are more and more different compared to the tested font, where mostly letters with different thicknesses are included.

A font combination or letter mix usually consists of selecting two or three fonts. Then we use contrast or a striking difference between fonts to highlight.

RECOGNITION

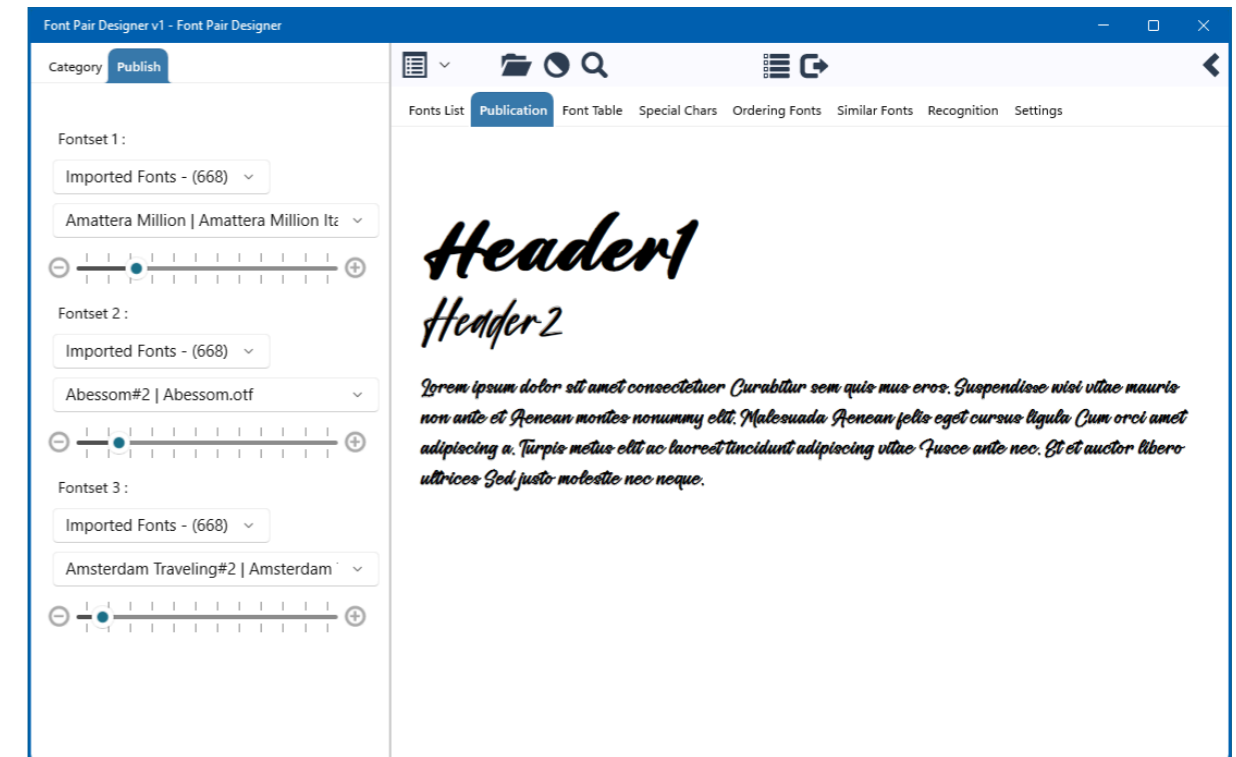
Recognizing a font or font type from an image or photo.



Use the drop-down folder icon to browse the image with the inscription "KOVESS MINKET". To facilitate recognition, the background of the letters should be white, the caption should preferably be black, and a few pixel spaces or margins should be left around the caption. In one of the videos on the website, I presented the character recognition process. If the image has been loaded, select a letter or part of a word and enter the letter in the text field in front of it, then start the loading process with the Load... button. The program searches among the letters included in the library we selected, if the given font is not in the library, it searches for a similar one from among the fonts that are included in the folder. Another video on the website shows how the basic set of LibreOffice fonts can be replaced with other Google fonts.

PUBLISHING

Select the "Publication" tabs on both sides.



It is a hierarchical template or template with two headers and a body. As usual for publications, the text is structured by specifying three separate fonts and sizes.